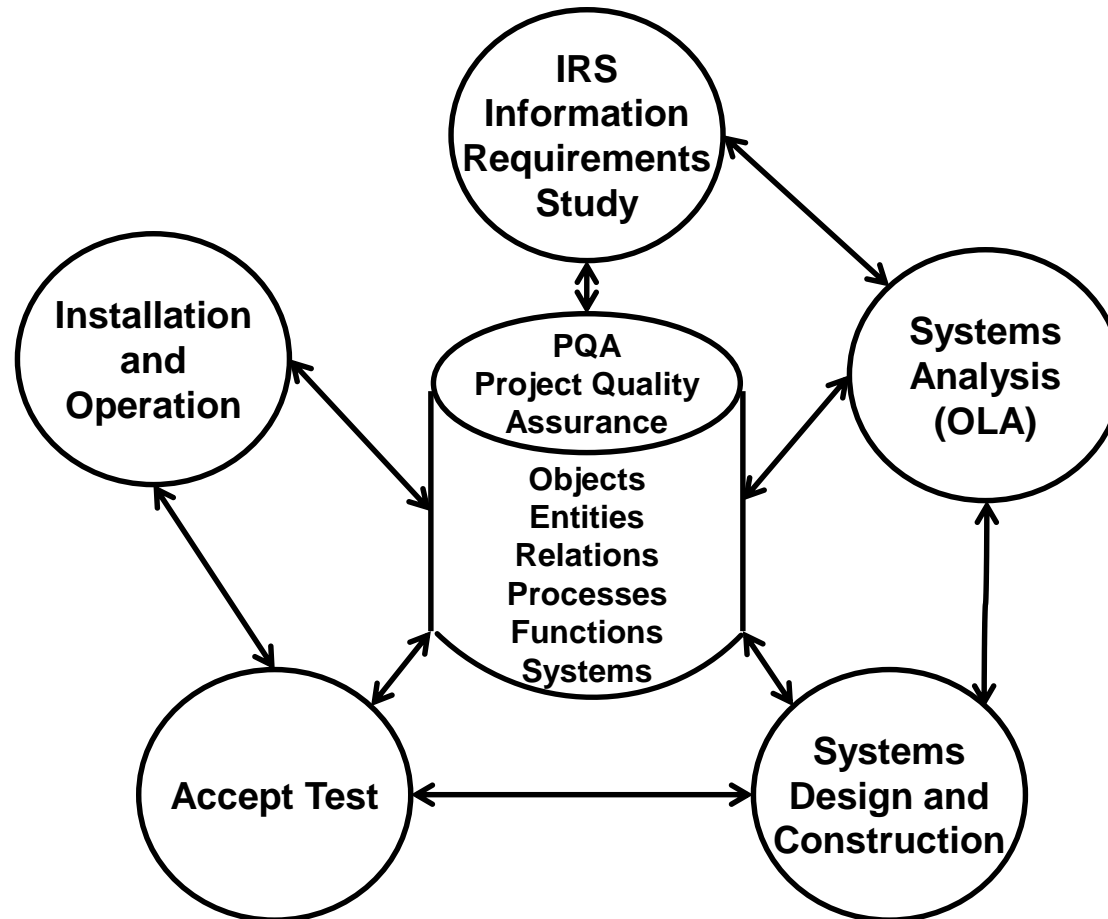


IRS Consolidation

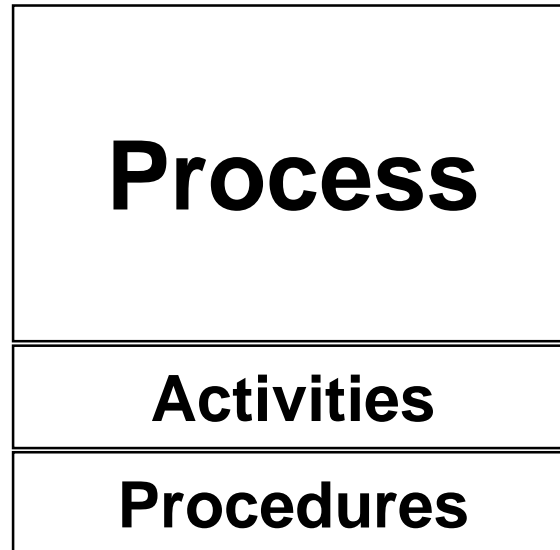


Strategic Initiative Lifecycle



Business Process

Man
Materials
Energy
Equipment
Information



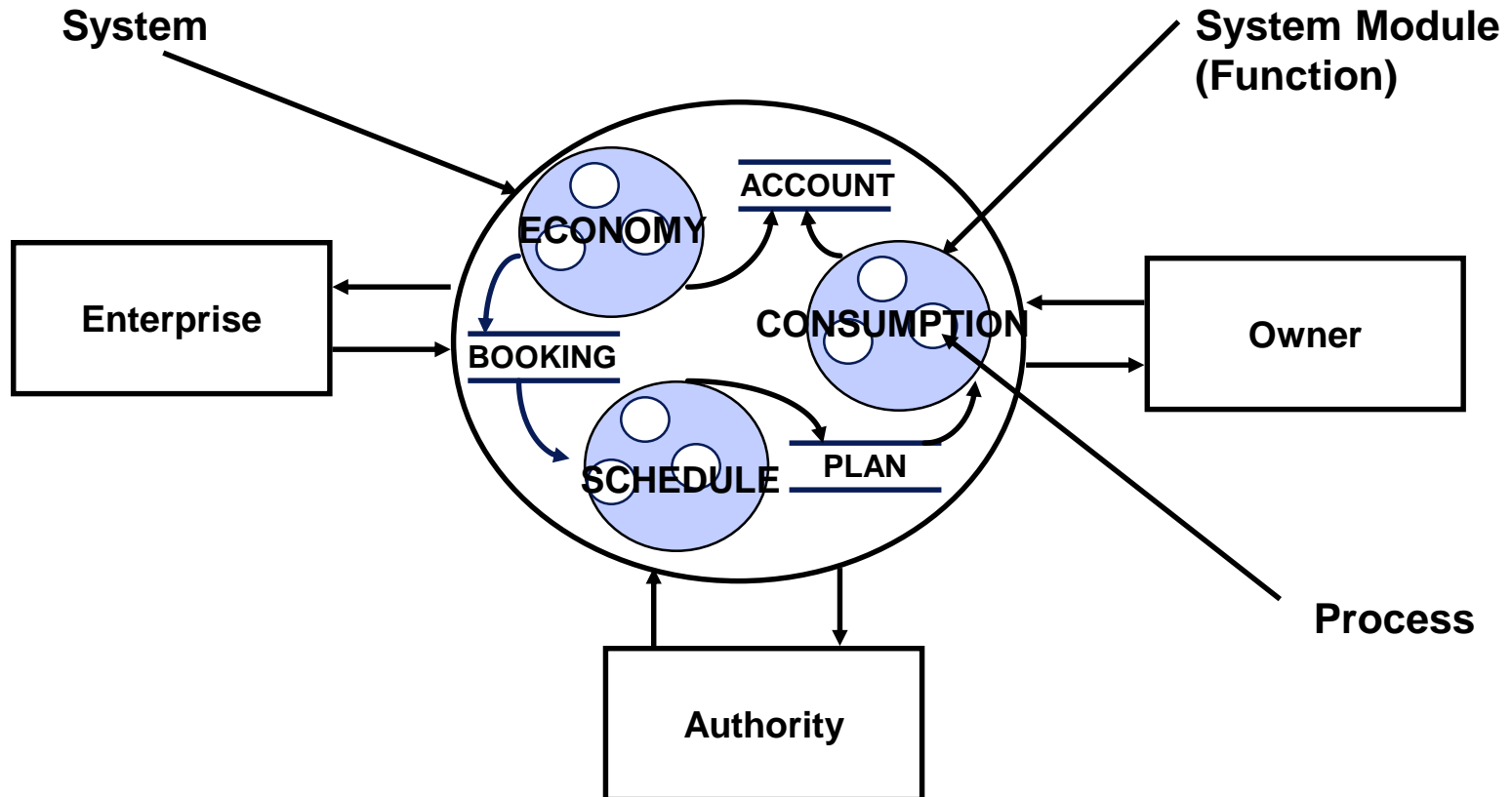
PRODUCT

Demanded by

CLIENT

Visibility
Well-defined Product
Multiple Solutions

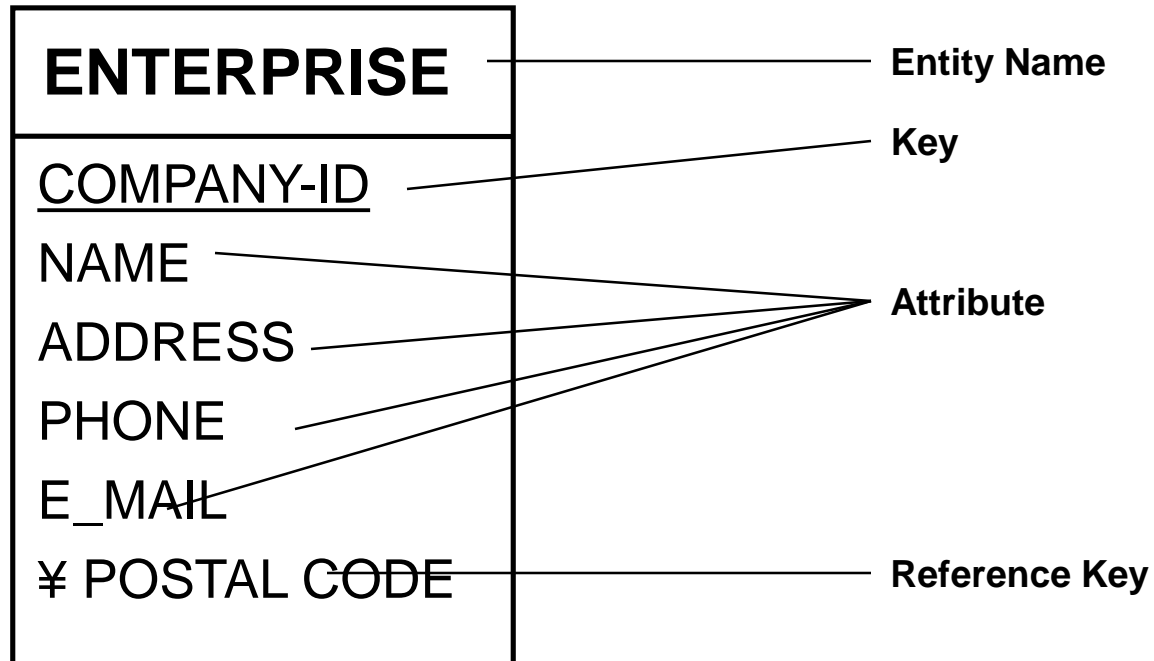
Information System



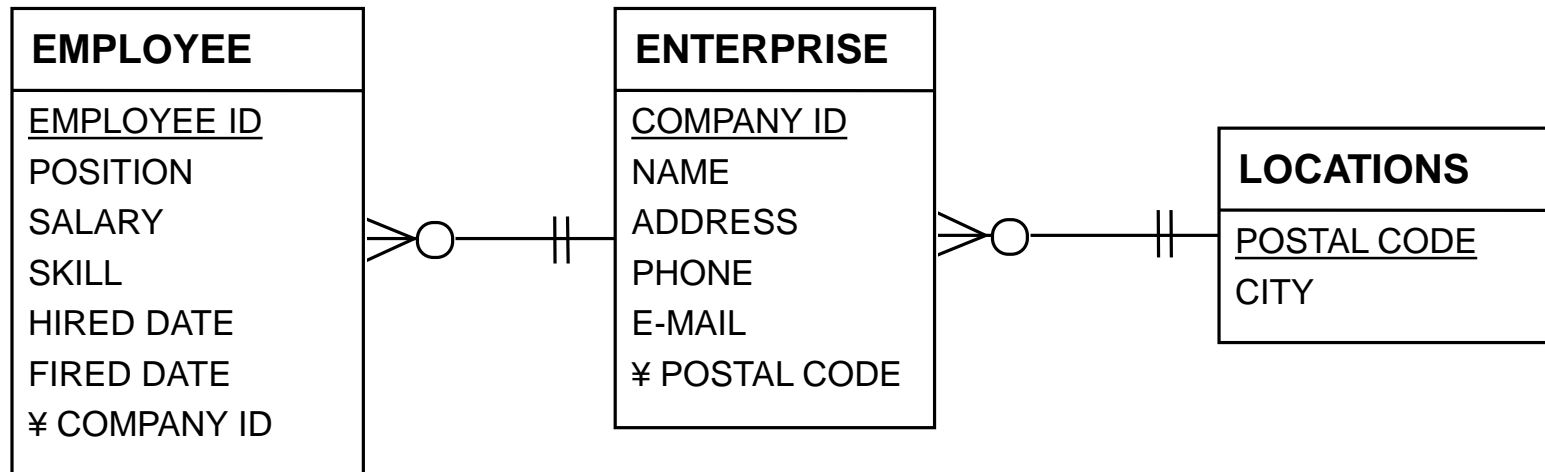
Object/Entity

- **A collection of related data**
- **Represents the Structure Items and the Actions about which the Organization wishes to Store Information**
- **May be interpreted as a Data Warehouse component**
- **Same Attributes for each object/entity Item**
- **Unique Object/Entity Item ID (Key Attributes)**
- **Relates to other objects/entities by Reference Key Attributes that are keys in these objects/entities**

Object/Entity



Entity Relationship Diagram



Object Types

- **Action Object (Transactions)**
 - **Describes an Action and its Result (Time Stamped – e.g. Purchase Order, Settlement, Payment, Corporate Action)**
- **Structure Object (Static Data)**
 - **Describes the Environment Handling in support of the Actions (e.g. Enterprise, Security, Person). May have Time Stamped Attributes (List items) such as Price, Value. May have other states (On/Off).**

OLA Matrix

Done on Flipchart:

- ID
- Attributes
- Key Attributes
- Reference Key Attributes

ORDER

OBJECT \ PROCESS	Create Order	Attach Agent	Select Exchange
CLIENT	R	R	
ORDER	C	R U	R U
AGENT	R	R	R
SECURITY	R		R

Object/Entity Description

- **Identification**
 - ID
 - Description
 - Capacity
- **Attributes**
 - Name
 - Key?
 - Reference Key?
 - Definition (Value List in Vocabulary)

Done on Flipchart:

- ID
- Attributes
- Key Attributes
- Reference Key Attributes

Process Description

- **Name**
 - **Definition**
 - Product, Scope, Purpose/Value
 - **Procedure Elements**
 - Decisions and Actions
 - **Object Usage**
 - By Object
 - **Integration**
 - Processes
 - External Systems
 - **Supported Functions**

Done on Paper:

- Draft on Workshop
- Result after Workshop
by Solution Designer

The Organization

- **IRS Reference group Role/Responsibility**
 - **Identify and Describe Business Processes**
 - **Define Business Process Object Usage and Product/Result**
 - **Review Notes and Conclusions made by Solution Designer and facilitator (After the Workshop)**

The Organization

- **Facilitator and Solution Designer Role/Responsibility**
 - **Proactive Listening**
 - **Understand Business Processes**
 - **Support Reference group**
 - Start Role Games**
 - Ask Questions**
 - **Note all Conclusions and Decisions about:**
 - Process Functions**
 - Process Object Usage**

The Organization

- **Facilitator/Solution Designer
Role/Responsibility**
 - **Document Objects:**
 - Definition
 - Keys
 - Attributes
 - Reference Keys
 - **Maintain Vocabulary**

Products

Documented by
Facilitator and
Solution Designers

- **System Components**
 - **Vocabulary**
 - **Process Definitions**
 - **Process Notes**
 - **Object Descriptions**
 - **Entity Relationship Diagrams**
 - **OLA Matrix**
 - **System Module Definition/Notes**

IRS Consolidated Report

Documented by
IRS Reference group
Facilitator/IRS Workgroup
Solution Designers

- **Summary**
- **Objective**
- **Method Used**
- **Situation Description/Pre-conditions**
- **Business Areas - needed Process and Information Improvements**
- **Required Solutions (Information systems) and their Benefits**
- **Cost Benefit Analysis**
- **Conclusion**
- **Attachments**